

Bethlehem University Journal Usage Dashboard

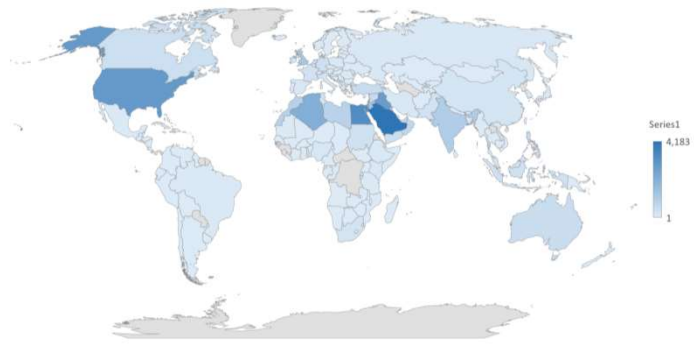
Period covered: January 2018 - June 2021

Usage Total and Trend by Year

Year	Year-by-Year Usage	Usage Trend over 12-month	Year-on-year %
2018	74		
2019	358		384%
2020	1,083		203%
2021	35,100		3141%

The 2021 usage covers the period January to June.

In the first six months of this year, usage has increased over thirtyfold compared to the whole of 2020.



Usage by Type of Organisation

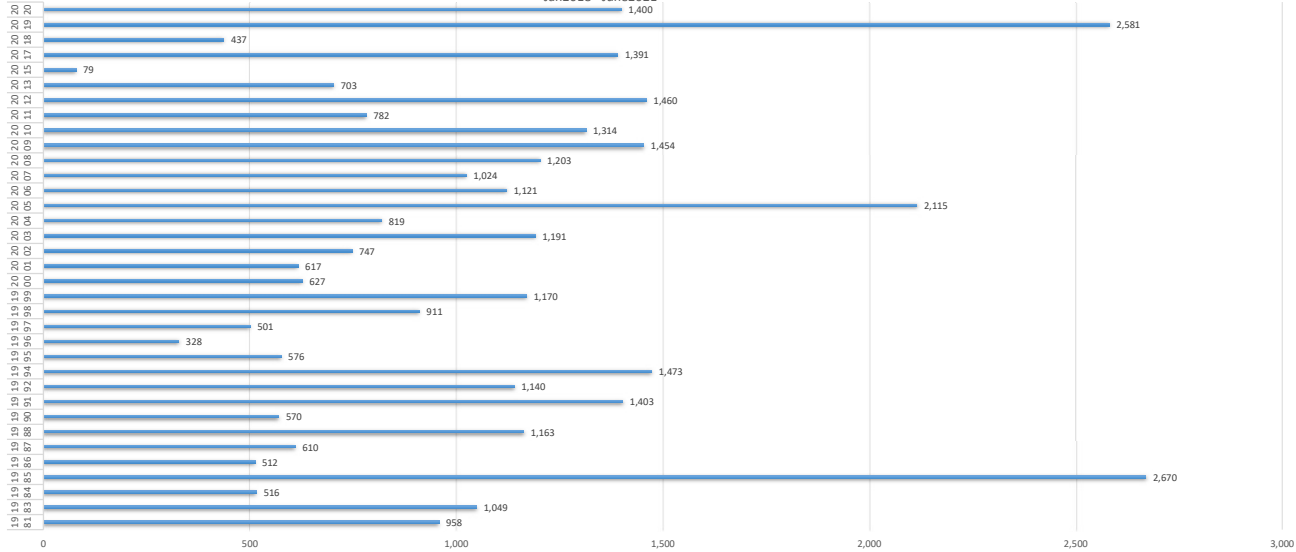
Unknown	21,086
Higher Education	4,180
Secondary School	384
Community College	169
Gov/NP	165
Public Library	47
Other	28
Corporate & For-Profit: Commercial	5
Corporate & For-Profit: Higher Education	3

Top 10 countries

SAUDI ARABIA	4,183
EGYPT	3,316
UNITED STATES	2,881
IRAQ	2,749
STATE OF PALESTINE	2,614
ALGERIA	2,132
ISRAEL	1,749
JORDAN	1,283
UNITED KINGDOM	1,266
INDIA	1,049

Usage by issue

Jan2018 - June2021



To the editors

Usage Total and Trend by Year: this dashboard provides usage statistics in any calendar year, with the exception of the current year that includes data to 30 June 2021. The Usage Trend sparklines show usage cycle over 12-month.

Usage by Type of Organisation: this table features organisations sorted by Type. You can see a full list of organisations sorted by usage on the tab 'By Institution_Pivot'.

Top 10 countries: we have selected the top 10 countries to show how the data can be presented.

Map allows a visualisation of geographic-related usage data in a user-friendly way.

Usage by issue: provides a snapshot of all usage by issue and cover year for specified period.

Article: to explore usage by article, please go to tab 'By Article'. The data is sorted by cover year so that the most recent articles are displayed at the top of the page.

If there are further statistics that you would like integrated to this dashboard, please let us know.